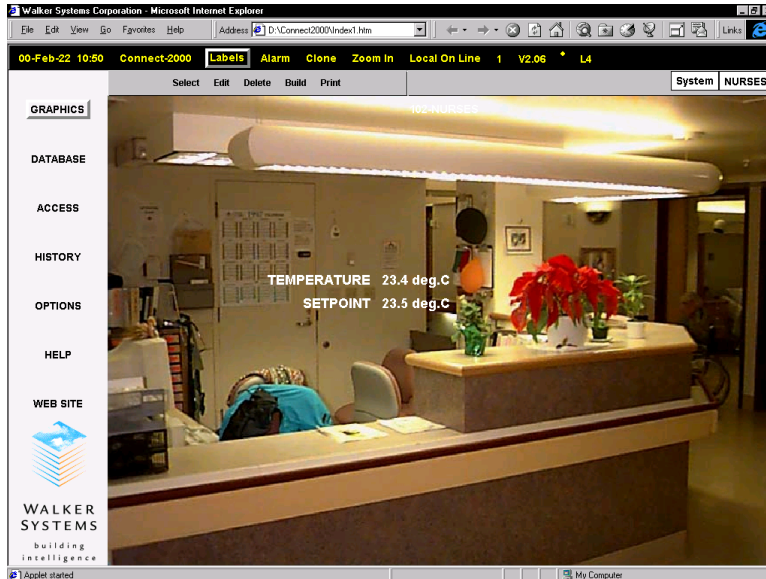




# WALKER SYSTEMS

building intelligence



## DESCRIPTION

Connect-2000 provides all the features of DOS based Connect-500, packaged in a Web browser front-end. Programmed in Java, it is platform and operating system independent. It supports a wide range of graphic formats including digital camera images and is compatible with third party software packages. Connect-2000 makes Walker Systems products Internet compliant providing you with access to on-line documentation, a technical support database, product specification and installation /maintenance guides on the Walker Systems Web Site.

This newly developed graphical interface allows operators to "surf" a building as they would surf the Internet. Operators navigate through intuitive menus to monitor or control environmental parameters locally, from across town, or from across the globe.

DESIGNED & MANUFACTURED IN CANADA BY **WALKER SYSTEMS CORPORATION**  
106 - 4226 COMMERCE CIRCLE VICTORIA, BC, CANADA V8Z 6N6  
TEL 250 727 0488 FAX 250 727 6481 email [walker@walkersys.com](mailto:walker@walkersys.com)

## Connect-2000 (BROWSER BASED FRONT-END SOFTWARE)

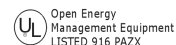
### APPLICATIONS

- full system supervisory capabilities
- historical trends and graphs
- building-specific graphic displays
- global system access from any connected controller and room sensor

### FUNCTIONALITY HIGHLIGHTS

- Adds the power of Internet/Intranet/ Extranet connectivity to your building
- Digital image backdrops from camera, engineering CAD drawings and canned images
- Platform and machine independence
- Real time dynamic values superimposed over graphic images
- Graphical Database creation/restore
- Completely compatible with Microsoft Excel and other third party software packages, streamlining report generation and data management
- Maximizes operator efficiency with state of the art visual control and user friendly animation
- Full multi-tasking
- On-line Internet access to the documentation and technical support
- Alarm dial out to remote site either over conventional modem or across the internet
- Communicates with Walker Systems DDC system over any TCP/IP Network

[www.walkersys.com](http://www.walkersys.com)



FORM # WSC99-066A

# Connect-2000 Browser Based Front-end Software

## TECHNICAL SPECIFICATIONS

### CONNECT-2000 BROWSER BASED FRONT-END

FEATURE	FUNCTION	BENEFIT
Global Access	<p>Operator connects to any RoomSTAT, MicroSTAT or CONTROLLER with a Palmtop, laptop, or any PC capable of running browser.</p> <p>Any point in the system can be accessed and controlled as if from the main operator workstation (OWS).</p> <p>Terminal access via a dumb terminal or OCD can also be accomplished</p>	Building operator need not be at the main OWS, or even in the same building to view, over-ride or command any point.
User Customization	<p>Easy to set up – Straightforward process for defining graphics and links. Digital photographs and other images can be quickly integrated into interactive graphics that give full control of the process from the graphic. Additional links to other graphics can be quickly added at any time.</p>	<p>Operator can quickly learn to efficiently use graphic and menu creation techniques to customize the system for his best use.</p> <p>Connect-2000 utility encourages the operator to configure and take ownership of the control systems.</p>
Drag and Drop Graphical Modifications	<p>Addition of Links to other points, programs, or graphics is as simple as selecting the object from a drop down list and dragging it to where you want it located. The resulting hotspot can then be optionally sized to be a small area or a whole floor. If the link is to other graphics, the thumbnail for this graphic can optionally be displayed.</p>	Operator utility
Graphical access to points, programs, Setpoints and Schedules	<p>All database items can be commanded or revised directly from the graphic with easy to use drop down menus.</p> <p>Includes input and output points, programs, controllers, schedules, trends, alarms, totalizers, etc.</p>	Instant access and control of the system with no prior knowledge of system or point names.
Slide Bar Schedule Modification	<p>Weekly and Annual schedules can be quickly and simply viewed and modified using slide bar controls.</p>	<p>Efficient visual indication</p> <p>Ease of use and understanding even for unskilled operators.</p>
Database Generation from the Front-end built in Corresponding graphic	<p>Database building is accomplished graphically by placing corresponding points directly on the appropriate graphic then defining them using the database revise features</p>	<p>All database and points defined directly on associated graphic right from the beginning</p> <p>Labels text file can be modified concurrently as database is built</p>
ASCII Format for all Database, Labels and Link Files	<p>For power users, all database and graphic link files are saved in ASCII files as an intermediate format</p> <p>Power users can create and revise these files using the editor of his choice</p>	<p>Programmer can quickly create a database for a new panel by quickly modifying an existing ASCII file.</p>
Trending for any point right on the Graphic Instant trend graphing for points or groups	<p>Any Database point can be set up for trending right on the graphic</p> <p>Trends can then be scheduled to scroll to disk automatically. Both timed sample and COV trending can be implemented</p> <p>Graphing and data analysis using Microsoft Excel or any standard program</p>	<p>Instant analysis of system operation</p> <p>Instant access to all trend data in an easy to use format</p> <p>Real time trending for turning of control loops.</p>
Animation	<p>Values can be colour coded to allow operators instant visual recognition of normal or non-normal states.</p> <p>Animation can also be used for indications of bas graphs etc.</p>	<p>Animation adds a high level of visibility and utility to the system.</p>