



WALKER SYSTEMS

building intelligence



DESCRIPTION

Bridge-2000E gives Connect-2000 full access to the Walker Systems DDC system over a TCP/IP Ethernet LAN. Any Connect-2000 workstation anywhere in the world that is capable of accessing the LAN has full control of the system.

Bridge-2000E is connected between a WS1600 or WS1616 panel and an Ethernet hub. It requires a unique IP address on the LAN. The Bridge-2000E encapsulates Walker Systems proprietary communication protocol within TCP/IP, allowing data transfer over the LAN.

The ability to connect to the system from workstations throughout the building, the organization, or the world brings tremendous flexibility to building management.

Bridge-2000E

(ETHERNET CONNECTION)

FEATURES

- Easy to install and configure
- Full multi-tasking allows operators to perform different and unrelated functions at the same time
- Provides low cost remote monitoring and control
- Adds the power of Internet/ Intranet/ Extranet connectivity to your building
- SNMP support
- Comes with all required cables and external power supply

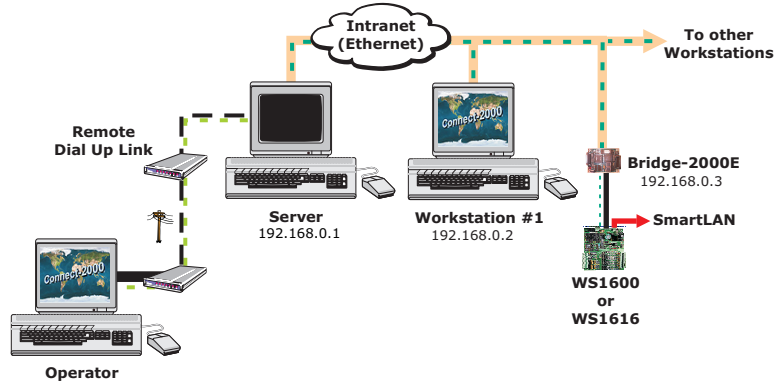
CASE

- case size (140 x 102 x 51 mm)

Bridge-2000E

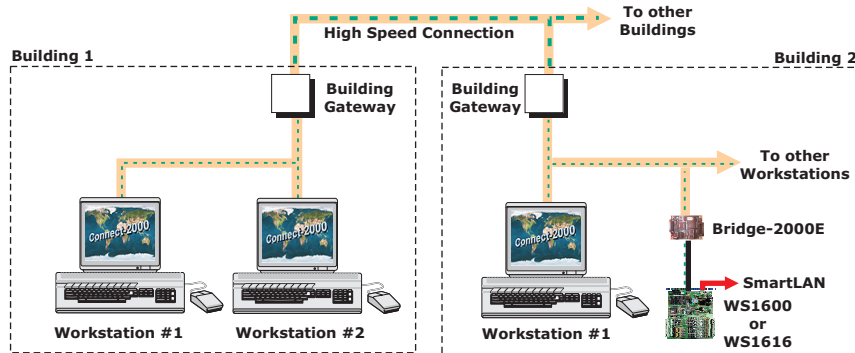
Example 1: Local Area Network (LAN)

The computer running Connect-2000 is on a LAN and has a unique IP address assigned on the LAN. The Bridge-2000E is also resident on the LAN at a unique IP address and is connected to the DDC system. The Connect-2000 software can communicate with the DDC system over this LAN. Any other computer running Connect-2000 with a unique IP address on the LAN can also communicate with the DDC system. Remember these addresses are only unique to the LAN they are attached to and are not unique to the Internet.



Example 2: Wide Area Network (WAN)

The computer running Connect-2000 is on a WAN and has a unique IP address assigned on the WAN. The Bridge-2000E is also resident on the WAN at a unique IP address and is connected to the DDC system. Any computer running Connect-2000 having a unique IP address on the WAN can communicate to the DDC system over the WAN.



Example 3: Extranet (Internet Based WAN)

The computer running Connect-2000 is on the Internet and has a unique IP address assigned. The Bridge-2000E is also resident on the Internet at a unique IP address and is connected to the DDC system. Anybody having a unique IP address on the Internet can also communicate with the DDC system.

